

Visible Laser Module

APCD-635-02-XX-A/B

6-2D-LM63-001 Rev.01

Φ6.2mm 635nm Laser Module

Power set by user

Features

1. APC (auto power control) IC inside
2. Low current consumption of the APC circuit
3. Surge current protection
4. High quality lens for output beam



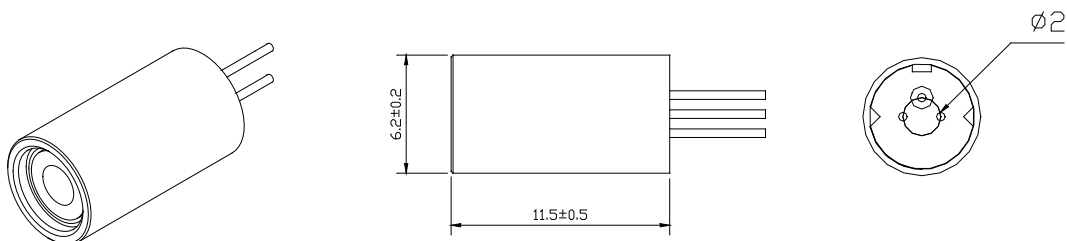
Absolute maximum ratings

Item	Symbol	Rating	Unit
Power supply voltage	V_{cc}	3.3	V
Laser Module optical output power	P_o	<3	mW
Operation temperature	T_{opr}	0~40	°C
Storage temperature	T_{stg}	0~60	°C

Electrical and optical characteristics ($T_c=25^\circ\text{C}$)

Item	Symbol	Min.	Typ.	Max	Unit	Condition
Wavelength	λ	-	634	-	nm	$P_o=3\text{mW}$
Operation current	I_{op}	-	-	50	mA	$P_o=3\text{mW } V_{cc}=3\text{V}$
Operation voltage	V_{op}	2.5	-	3.3	Volt	
Laser Beam spot size at 10m		<10mm				
Divergence angle		1.1 mrad				
Mean time to failure (MTTF) 25°C		>5000 hrs				

Outline dimensions (Units: mm)



Aperture Size : 2.4mm

Laser Safety Precautions

1. Do not look into the laser beam directly by eyes. The laser beam may cause severe damage to human eyes.
2. Optical Lens is made of plastic or glass. Do not contaminate lens by soiling, oil or chemical.

** For reference only. Contents above are subject to change without notice*

Contact

For US, Canada
For EU
For Japan

Ayase America Inc.
Ayase Europe GmbH
Ayase Co., Ltd.

e-mail: info@ayaseamerica.com
e-mail: info@ayase-europe.de
e-mail: info@ayasecorporation.com

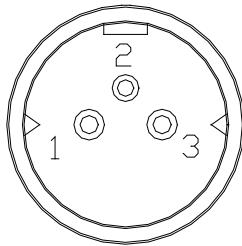
+1-408-988-5277
+49-0-6122-533-811
+81-45-532-9501

Visible Laser Module

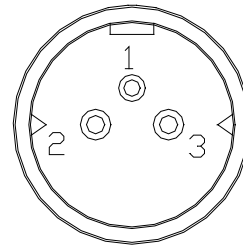
APCD-635-02-XX-A/B

6-2D-LM63-001 Rev.01

PIN Assignment:



Pin 1 : Vcc
Pin 2 : GND
Pin 3 : PD

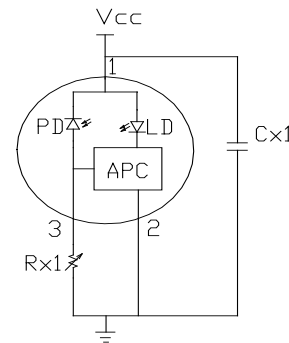


A type : Heat sink stand (-)

B type : Heat sink stand (+)

Laser power Adjustment Procedure

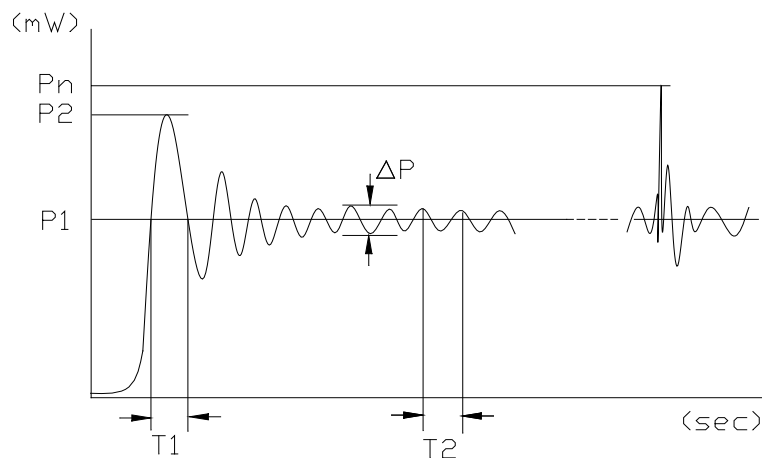
1. Connect 1 uF capacitor (Cx1) between Pin1 and Pin2.
2. Connect 20~50K ohm variable resistor (Rx1) between Pin2 and Pin3.
3. Set Vcc to the designed value.
4. Adjust Rx1 to obtain the desired output power.
5. Laser Safety Precautions



- (1) Do not increase Vcc value when the laser module is working near the maximum power . That is to protect laser from overdriving condition and make sure power is under 3 mW.
- (2) Do not operate the device above the maximum rating condition, even momentarily. It may cause unexpected permanent damage to the device.

Laser power stability

P1 : 2.5mW
 P2 : < 3mW
 Pn : <3mW
 ΔP : < 0.5mW
 T1 : < 0.1us
 $f_2 = (1/T_2)$: 3MHz



NOTE:

P1 : Mean power
 P2 : Max power from turning on power
 Pn : Max power from Vcc noise
 ΔP : Power Amplitude of vibration
 T1 : Time between trigger and convergence
 $f_2 = (1/T_2)$: Frequency of output power

** For reference only. Contents above are subject to change without notice*

Contact

For US, Canada
 For EU
 For Japan

Ayase America Inc.
 Ayase Europe GmbH
 Ayase Co., Ltd.

e-mail: info@ayaseamerica.com
 e-mail: info@ayase-europe.de
 e-mail: info@ayasecorporation.com

+1-408-988-5277
 +49-0-6122-533-811
 +81-45-532-9501